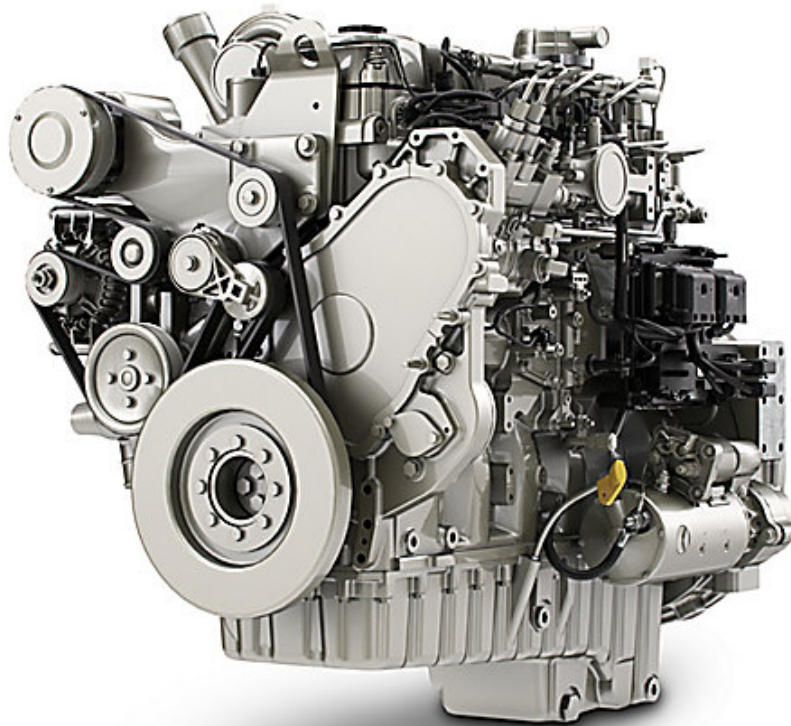




# 1706J-E93TA

## Product Images



## Additional Information

---

Speed	1800-2200 rev/min
Number of cylinders	6
Bore	115 mm
Race	149 mm
Displacement	44264
Combustion	Direct injection
Compression	17:1
Direction of rotation	Counterclock wise
Weight	865 kg
Width	791 mm
Height	1068 mm
Depth	1125 mm
Max Power	455.95 hp
Max Power	340 kW
Power Node	174 to 751hp
Emissions Tier	4f/V

